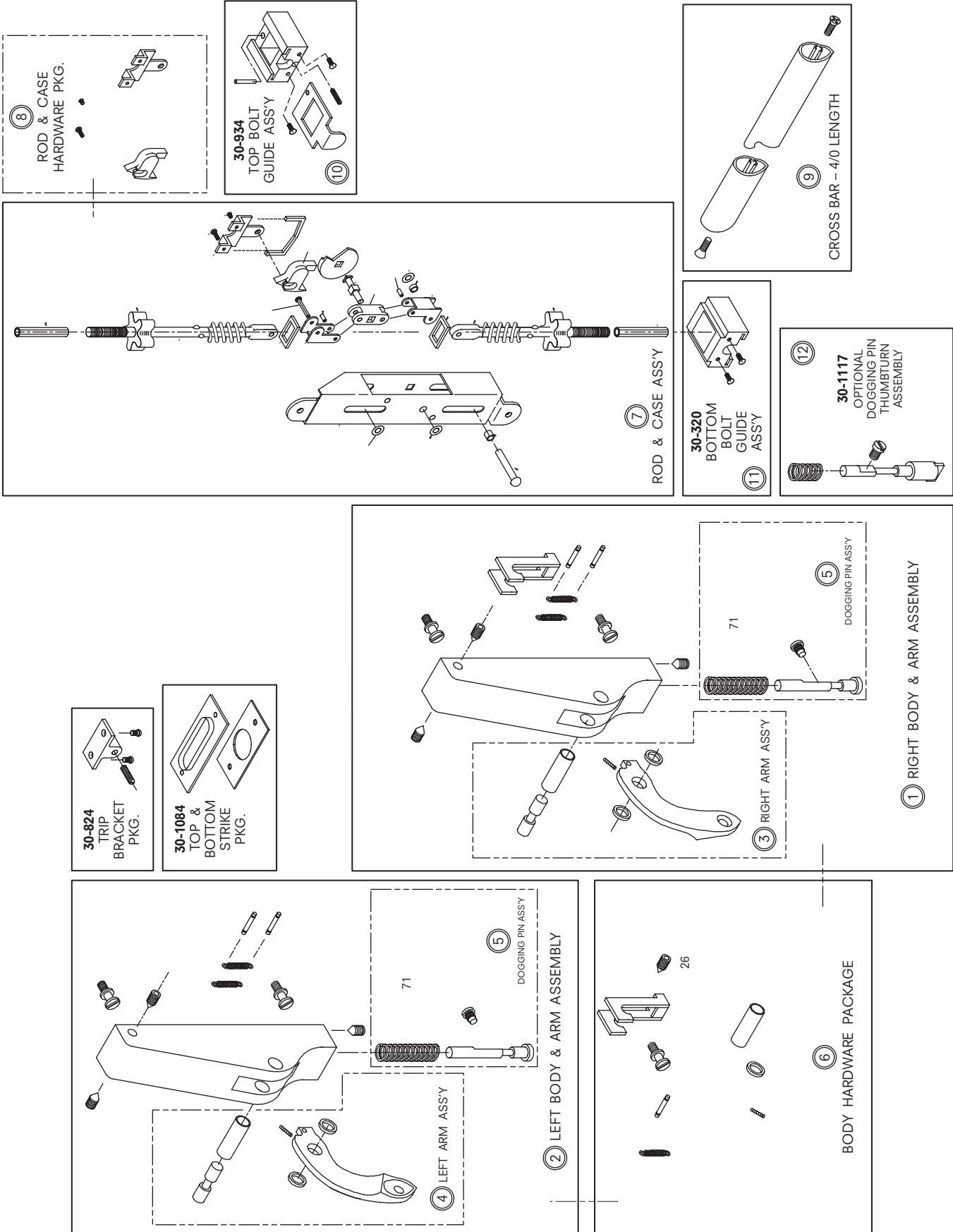


1085 CONCEALED VERTICAL ROD



ASSEMBLY NO.	PART NO.	DESCRIPTION	FINISH
1	30-982	RIGHT BODY & ARM ASSEMBLY	US28 / 628 DBZ 313 BLK 335
2	30-983	LEFT BODY & ARM ASSEMBLY	US28 / 628 DBZ 313 BLK 335
3	30-1243	RIGHT ARM ASSEMBLY	US28 / 628 DBZ 313 BLK 335
4	30-1242	LEFT ARM ASSEMBLY	US28 / 628 DBZ 313 BLK 335
5	30-1115	DOGGING PIN ASSEMBLY	
6	30-1409	BODY HARDWARE PACKAGE	
7	30-915	ROD & CASE ASSEMBLY - 7/0	
8	30-916/30-865	ROD & CASE HARDWARE PACKAGE/VISTAWALL ROD&CASE	
9	30-733-PKG	CROSSBAR ASSEMBLY - 4/0	US28 / 628 DBZ 313 BLK 335
10	30-934	TOP BOLT GUIDE ASSEMBLY	US28 / 628 DBZ 313 BLK 335
11	30-320	BOTTOM BOLT GUIDE ASSEMBLY	US28 / 628 DBZ 313 BLK 335
12	30-1117	DOGGING PIN ASSEMBLY - Thumbturn	US28 / 628 DBZ 313 BLK 335
	30-763P	TOP or BOTTOM BOLT (59)	
	30-824	TRIP BRACKET PACKAGE	US28 / 628 DBZ 313 BLK 335
	30-1084	STRIKE PACKAGE - Top & Bottom	US28 / 628 DBZ 313 BLK 335