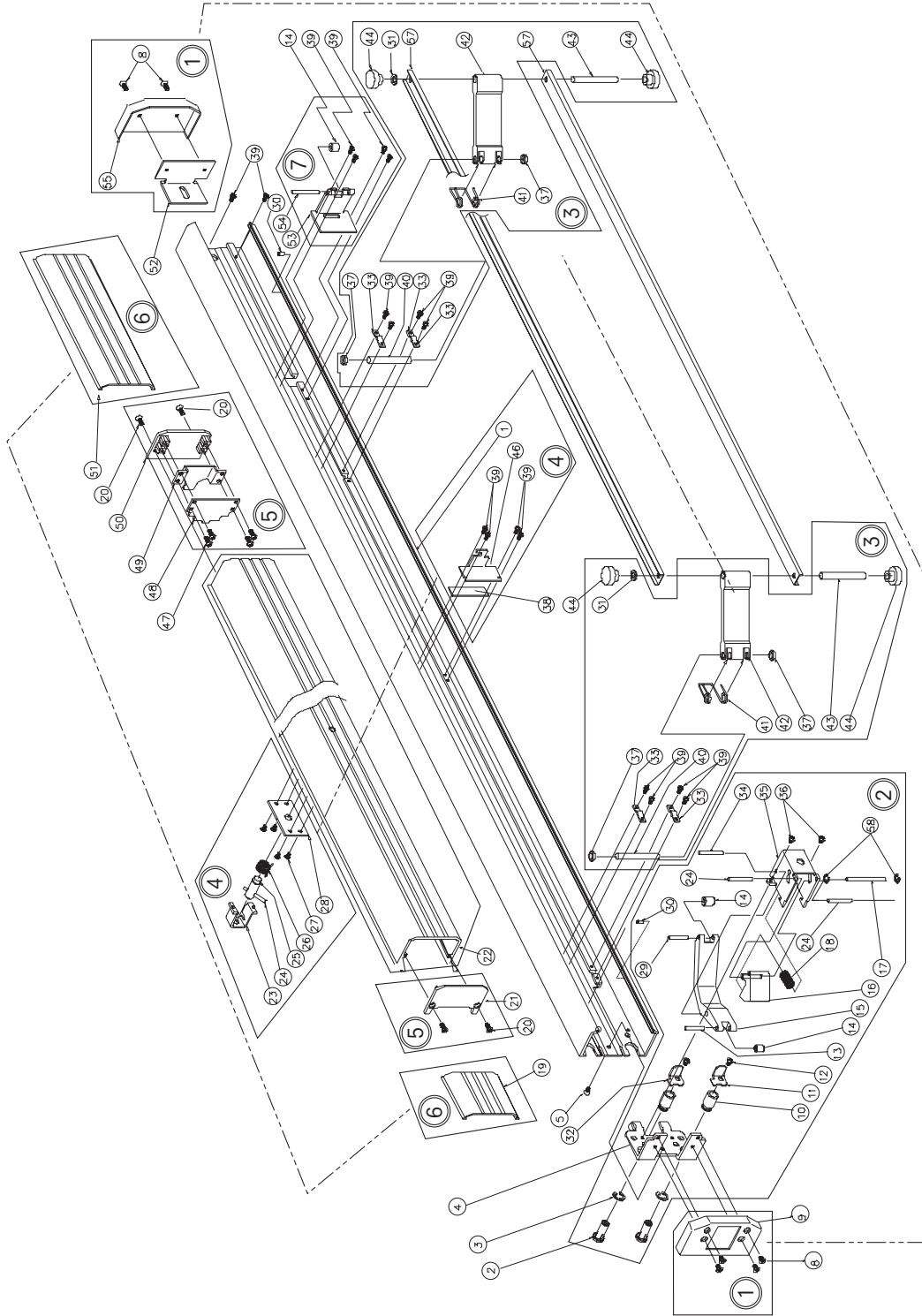




# 1295 RIM EXIT DEVICE



ASSEMBLY NO.	PART NO.	DESCRIPTION	SIZE	FINISH
1	30-2677	BASECOVER PLATE PACKAGE		
2	30-2679	LATCH ASSEMBLY PACKAGE		
3	30-2664	CONTROL ARM HARDWARE PACKAGE		
4	30-2670	DOGGING ASSEMBLY		
5	30-2697	PUSH PAD END CAP PACKAGE		
6	30-2674	COVER PLATE PACKAGE		US28/628 DBZ 313
7	30-2697	CONTROL BRACKET PACKAGE		