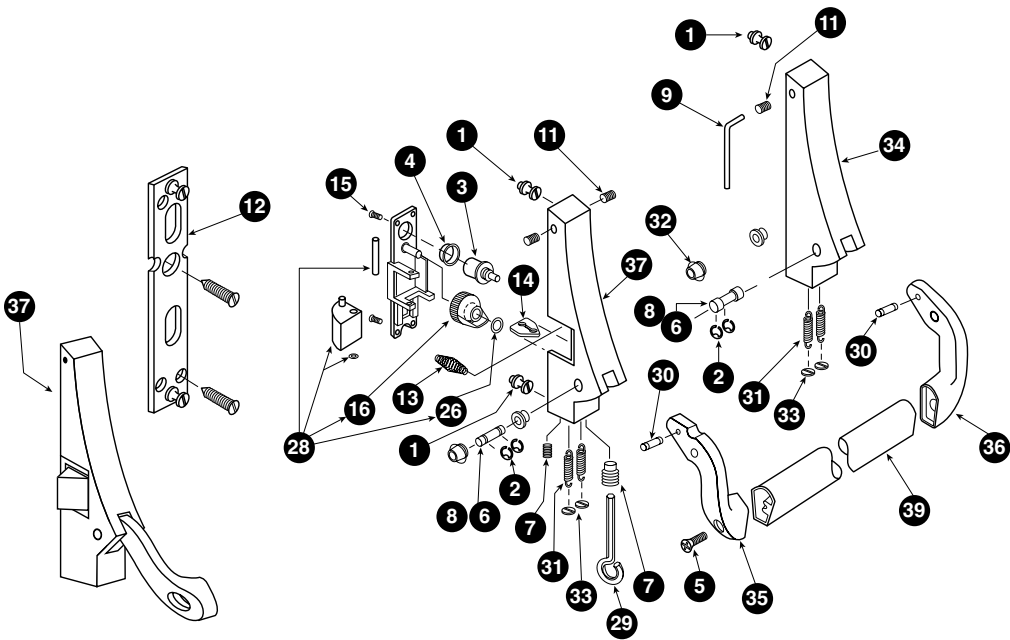


EXPLODED VIEW

2090 SERIES DEVICE PARTS  
(For Devices Furnished After 5/1/77)

Left Hand Reverse Shown



2090 SERIES EXPLODED VIEW AND DEVICE PARTS LIST

	Part No.	Description	US Finish	BHMA Finish	Pkg Qty	Price
1	STUD.101	Case mounting stud	-	-	10	\$40.00
2	RRING.103	Retaining ring .250	-	-	10	\$19.00
3	CAM.102	Pinion cam	-	-	10	\$192.00
	4270903177	Pinion cam	-	-	Each	\$32.00
4	BUSH.102	Cylinder bushing	-	-	10	\$35.00
5	SCREW.1027	1/4-20 1" FPHTC TYP23	US32D	630	10	\$54.00
	SCREW.1015	1/4-20 1" FPHTC TYP23	Black	-	10	\$54.00
	PIN.115	2090 Axle pin	US32D	630	10	\$178.00
	PIN.116	Latch pivot pin	-	-	10	\$20.00
7	SCREW.1022	Dog screw	-	-	25	\$158.00
9	WRENCH.101	Allen wrench	-	-	10	\$23.00
11	SCREW.1030	1/4-20 3/8" Hex soc set screw	US32D	630	25	\$43.00
	SCREW.1039	1/4-20 3/8" Hex soc set screw	Black	-	25	\$43.00
12	4270100304	Adapter plate assembly	-	-	2	\$40.00
13	SPRING.104	Latch spring	-	-	10	\$23.00
14	4270101840	Latch link	-	-	Each	\$20.00
15	SCREW.1031	4-40 3/8" FL Posi-drive screw	-	-	10	\$20.00
16	RETRACT.102	Latch bolt retractor	-	-	10	\$224.00
26	RRING.102	Retaining ring .240	-	-	10	\$19.00

EXPLODED VIEW

2090 SERIES DEVICE PARTS  
(For Devices Furnished After 5/1/77)

2090 SERIES EXPLODED VIEW AND DEVICE PARTS LIST

	Part No.	Description	US Finish	BHMA Finish	Pkg Qty	Price
28	4270902968	2090 Backplate assembly LHR	-	-	Each	\$92.00
	4270902974	2090 Backplate assembly RHR	-	-	Each	\$92.00
29	KEY.101	Hex dogging key	-	-	10	\$54.00
	4270100312	Crossbar tie rod	-	-	Each	\$99.00
30	PIN.104	Spring pin	-	-	10	\$34.00
	SPRING.103	Tension spring	-	-	10	\$43.00
32	BUSH.103	Axle bushing	-	-	25	\$43.00
33	RETAIN.102	Spring retainer	-	-	25	\$32.00

LOCKS

EXIT DEVICES

DOOR CLOSERS

ELECTRONICS

MERCHANDISING AIDS

FORMS