

# OFFSET HUNG TOP PIVOTS

## PIVOTS AND PIVOT SETS

### MODEL 180

#### Description & Features

- Full mortise
- Non-handed
- Standard top pivot for most offset pivot sets and floor closers
- Oil-impregnated sintered bronze bushing
- 3/4" (19mm) offset (measured from centerline of pivot to face of door)
- Non-ferrous base material
- Furnished with wood and machine screws
- Available finishes: plated (180, H180, 180-20, H180-20); plated or sprayed (F180, FH180)

#### Optional Features

- Available for 1-1/2" (38mm) offset
- For extra wide or high traffic prefix "H" – H pivots have heavy-duty needle bearings; available in 1-1/2" (38mm) offset
- Available with longer than standard pivot pins. Increments are 1/4" (6mm), 1/2" (13mm), 3/4" (19mm) only

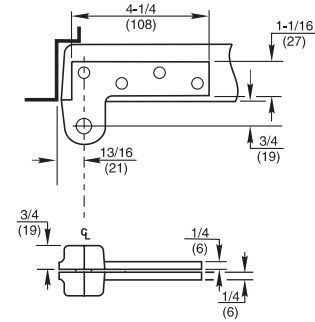
#### Compliance

- Available for fire door assemblies (ferrous material) – specify F180 or FH180
- For 20-minute label suffix "-20" to the part number
- Cal Fire 3725-0047:0108 (-20 min)



#### Technical Information

(Frame stop required)



### MODEL 180 X 102

#### Description & Features

- Full mortise
- Handed
- Special top pivot for doors in deep reveals or unusual door details where one leaf is too long for the normal door or frame portion
- Oil-impregnated sintered bronze bushings
- Non-ferrous base metal
- May be inverted
- Furnished with wood and machine screws
- Available in plated finishes

#### Optional Features

- Available for 1-1/2" (38mm) offset
- Available with longer than standard pivot pins. Increments are 1/4" (6mm), 1/2" (13mm), 3/4" (19mm) only



#### Technical Information

(Frame stop required)

