

CENTER HUNG TOP PIVOTS

PIVOTS AND PIVOT SETS

MODEL 320

Description & Features

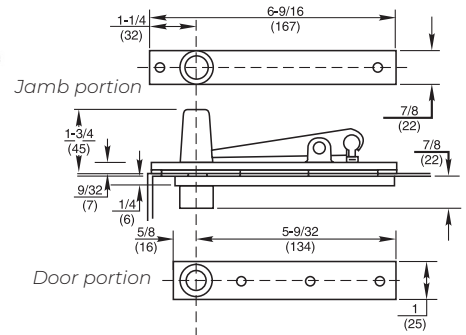
- Fully concealed
- Non-handed
- Standard top pivot for models 127-3/4, 128-3/4, and 176 pivot sets
- Walking beam-type pivot – 1/2" (13mm) diameter pivot pin with 3/4" (19mm) engagement
- Oil-impregnated sintered bronze bushing
- Completely concealed when door is closed
- Furnished with wood and machine screws
- Available in plated finishes

Optional Features

- Available with longer than standard pivot pins. Increments are 1/4" (6mm), 1/2" (13mm), 3/4" (19mm) only



Technical Information



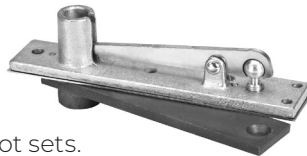
MODEL 340

Description & Features

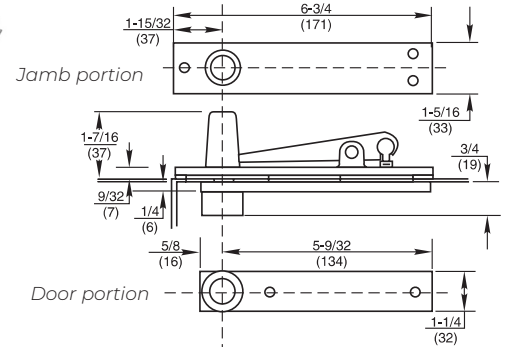
- Fully concealed
- Non-handed
- Standard top pivot for Models 370 and 117-3/4 pivot sets. Also used for 28, 30, 40 and 50 Series floor closers
- Walking beam-type pivot – 1/2" (13mm) diameter pivot pin with 3/4" (19mm) engagement
- Oil-impregnated sintered bronze bushing
- Completely concealed when door is closed
- Furnished with wood and machine screws
- Available in plated finishes

Optional Features

- Available with longer than standard pivot pins. Increments are 1/4" (6mm), 1/2" (13mm), 3/4" (19mm) only



Technical Information



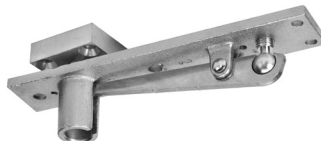
MODEL 340 X 102

Description & Features

- Fully concealed
- Non-handed
- Optional top pivot for doors or frames that have conflicts with other hardware
- Can be inverted. The walking beam portion would be installed the header of the frame
- No finish plate supplied
- If inverted, finish plate should be ordered and priced separately
- Oil-impregnated sintered bronze bushing
- Completely concealed when door is closed
- Furnished with wood and machine screws
- For lighter weight doors use 320 x 102
- Available in plated finishes

Optional Features

- Available with longer than standard pivot pins. Increments are 1/4" (6mm) up to 3/4" (19mm)



Technical Information

